

## Setup

Set Up Supplies (Menu > Supplies > Setup)

1.3.8. 5. Analizatoriuose yra ši informacija: reagentų pavadinimai, reagentų tinkamumo naudoti laikas po atidarymo (nuo įdėjimo į analizatorių), partijos Nr., likusio tūrio/tyrimų kiekis, yra informacija/įspėjimas apie besibaigiančius reagentus.

Figure 9.3 Supplies Screen

The Supplies screen displays a table of reagent information. At the top, there is a 'Waste Status' section with an 'OK' button. Below this, there are six reagent bottles represented by icons with colored backgrounds (Not In Use, 100%, 100%, 100%, 100%, 100%). The table below lists the following information for each reagent:

	1	2	3	4	5	6
Manufacturer	BCI	BCI	BCI	BCI	BCI	BCI
Product Name	COULTER® DxH Diluent	COULTER® DxH Diluent	COULTER® DxH Cleaner	COULTER® DxH Diff Pack	COULTER® DxH Retic Pack	COULTER® DxH Cell Lyse
Part Number	628017	628017	628022	628020	628021	628018
Supply Type	Diluent	Diluent	Cleaner	Diff Pack	Retic Pack	CBC Lyse
Lot Number	2375678	2945678	5456789	5178901	8789012	3456789
Date Opened	03/03/2009	03/03/2009	03/03/2009	03/03/2009	03/03/2009	03/03/2009
Open Expiration Days	60	60	90	60	60	60
Use Before	05/02/2009	05/02/2009	06/01/2009	05/02/2009	05/02/2009	05/02/2009
Shelf Life Expiration	09/22/2009	09/22/2009	09/23/2009	09/23/2009	09/23/2009	09/22/2009
Operator	Admin	Admin	Admin	Admin	Admin	Admin
Cycles Remaining	160	160	15	1250	904	909

At the bottom of the screen, there is a navigation bar with buttons: Setup, Edit DxH, Configure Containers, Configure Low Level, View Log, Refresh, and several empty buttons.

## Set Up DxH Supplies(Menu > Supplies > Setup)

The hand-held Bar-code scanner allows you to automatically upload DxH Supply information from the Setup Supplies dialog box.

1.3.8. 4. Reagentų duomenys įvedami į analizatorių nuskaitant brūkšninį kodą.

**Figure 9.4** Setup Supplies Dialog Box

The screenshot shows the 'Setup Supplies' dialog box overlaid on the 'Supplies' screen. The dialog box has a title bar with 'Online' and 'Menu' buttons. The main content area is divided into two panes. The left pane, 'Supply Information Preview', contains five text input fields: 'Type', 'Lot Number', 'Date Opened', 'Use Before', and 'Shelf Life Exp'. The right pane, 'Barcode Information', contains a text box with the instruction 'Scan or manually enter barcode labels and press <Enter>' and two text input fields labeled 'Barcode #1' and 'Barcode #2'. Below the input fields are five buttons: 'Clear', 'Next', 'OK', 'Cancel', and 'Help'. A yellow arrow points from the 'Setup' button in the local navigation bar at the bottom of the screen to the 'Setup Supplies' dialog box.

- 1 With the Setup Supplies dialog box open, scan the bar-codes on the Beckman Coulter reagent container. The supply information is automatically updated.
- 2 Select **OK** to complete the setup, or **Next** to configure another supply.

## System Setup (Menu > Setup > System)

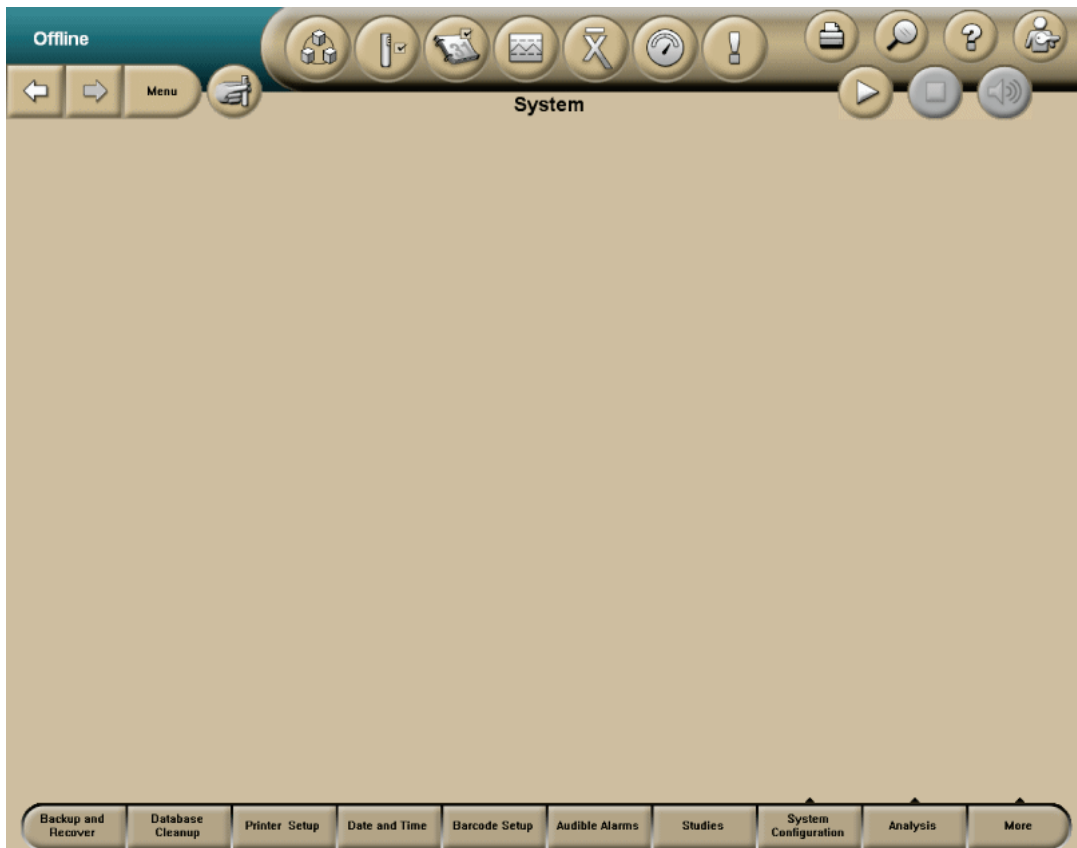
You can setup any of the options shown in the local navigation bar of the System screen:

- Backup and Recover
- Database Cleanup
- Printer Setup
- Date and Time
- Barcode Setup
- Audible Alarms
- Studies

## Setup

System Setup (Menu > Setup > System)

- System Configuration
- Analysis
- More: Configure Transport, Aspiration Retry, Remote Management, Set Instrument Name, Primary Identification



## Backup and Recover (Menu > Setup > System > Backup and Recover)

The DxH 800 gives you the option of performing a backup for use in case you should ever need to recover your database. Backups are saved to the removable hard drive that comes with your System Manager. You can configure an automatic backup or do a manual backup from the Backup and Recover screen.

**CAUTION**

Restoration of previous information may negate changes made since the configuration was last recovered (or the database was last backed up). Please verify the appropriateness of setup / configuration information before proceeding.

Figure 9.5 Backup and Recover Screen

The screenshot shows a software interface titled "Backup and Recover". At the top, there is a toolbar with icons for various functions and a "Menu" button. Below the toolbar, the interface is divided into two main sections: "Last Backup" and "Next Backup".

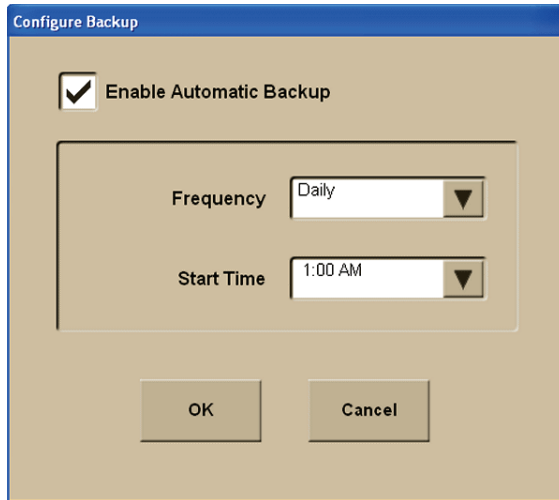
**Last Backup Section:**

- Status:** A text field containing "Not Backed Up".
- Begin:** An empty text field.
- Completed:** An empty text field.

**Next Backup Section:**

- Status:** A text field containing "Not Scheduled".
- Begin:** An empty text field.
- Frequency:** An empty text field.

At the bottom of the screen, there is a row of buttons. The first two buttons are labeled "Config Backup" and "Manual Backup". The remaining buttons are unlabeled.

**Configure Automatic Backup (Menu > Setup > System > Backup and Recover > Config Backup)**

- 1 To enable Automatic Backup, select the **Enable Automatic Backup** check box.
- 2 Select the frequency for automatic backup from the **Frequency** drop-down list.
- 3 Select a time to start automatic backup from the **Start Time** drop-down list.
- 4 Select **OK**.

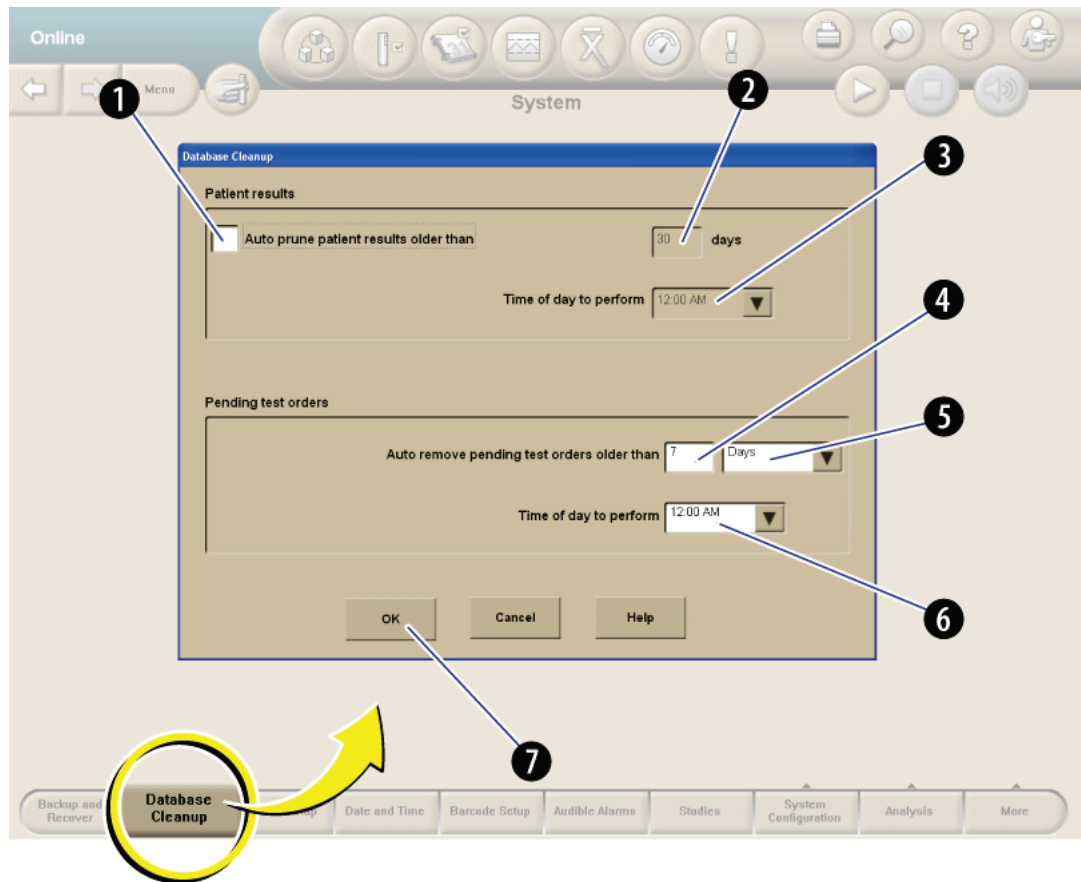
**Perform Manual Backup (Menu > Setup > System > Backup and Recover > Manual Backup)**

- 1 The following warning displays: ***WARNING: You are about to backup the system to your backup hard drive. Manual Backups will always overwrite the contents of the backup hard drive. Be sure the correct hard drive is in place for the backup. Select OK to continue.***
- 2 Select **OK** to continue with the manual backup.

**Database Cleanup (Menu > Setup > System > Database Cleanup)**

The Auto prune function allows you to automatically delete patient results that have been in the database beyond a defined number of days. You can also automatically remove unused pending test orders from the Worklist. This enhances database performance.

**Figure 9.6** Database Cleanup Dialog Box



- 1 To automatically prune patient results older than a specified number of days, select the **Auto prune patient results older than** check box in the **Patient results** area of the Database Cleanup dialog box.
- 2 Indicate the **Time of day to perform** the Auto prune.
- 3 To automatically remove pending test orders older than a specified number of days or hours, type that number in the **Auto remove pending test orders older than** text box.
- 4 Select **Days** or **Hours** from the drop-down list.
- 5 If you selected Days, indicate the **Time of day to perform** the removal.

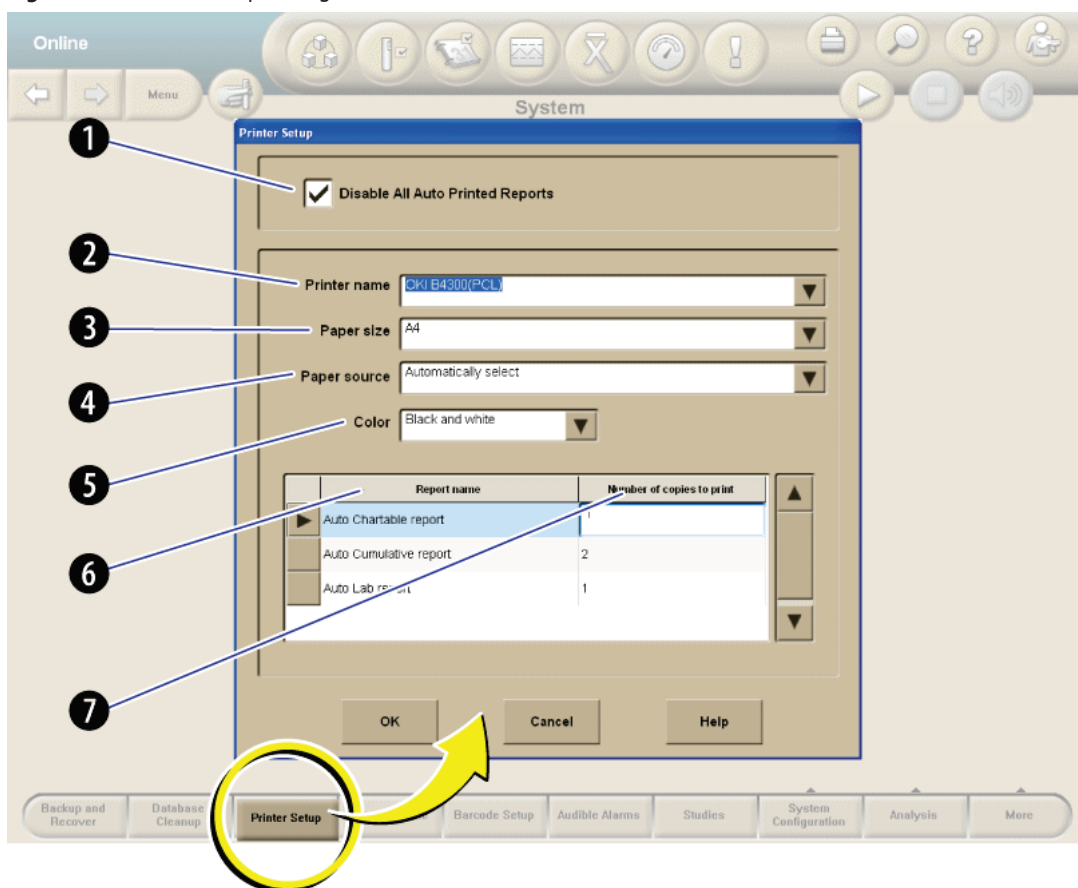
## Setup

System Setup (Menu > Setup > System)

6 Select **OK**.

## Printer Setup (Menu > Setup > System > Printer Setup)

Figure 9.7 Printer Setup Dialog Box



### Set Up the Printer

1 To disable auto print, select the **Disable All Auto Printed Reports** check box.

**NOTE** This check box allows you to quickly disable auto printing from any source, in case a printing problem is encountered.

2 Select a **Printer Name** from the drop-down list.

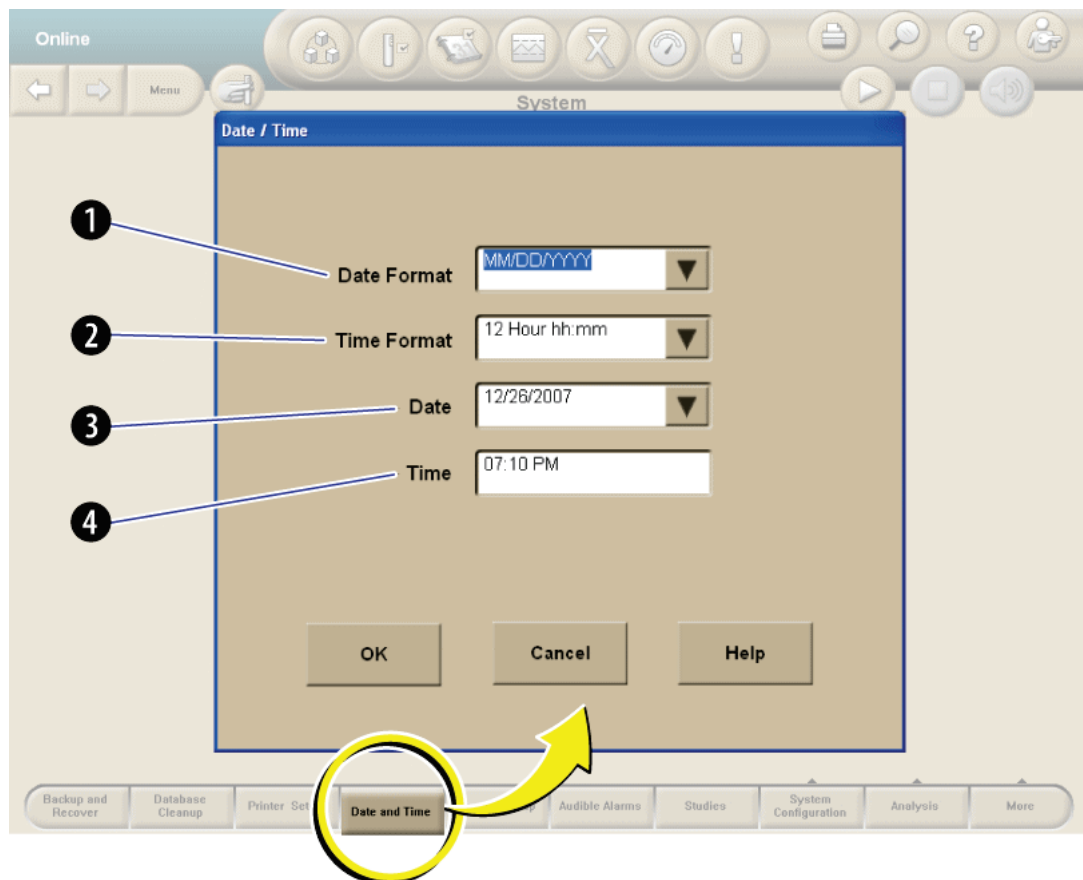
3 Select a **Paper Size** specific to the selected printer from the drop-down list.

- 4 Select a **Paper Source** from the drop-down list.
- 5 To print in color, select **Color** from the **Color** drop-down list. The system default is to set to print in black and white.
- 6 Select the **Number of Copies** to print for each Patient Results **Report Name**.  
**NOTE** The value of **Number of Copies** must be 1 or 2.
- 7 Select **OK**.

## Date and Time (Menu > Setup > System > Date and Time)

This configuration overrides the operating system date and time.

**Figure 9.8** Date / Time Dialog Box





## Setup

System Setup (Menu > Setup > System)

- 1 Select a date format from the **Date Format** drop-down list, or type a date in the format that you've selected.
- 2 Select a time format from the **Time Format** drop-down list.
- 3 Select a date from the **Date** drop-down list.
- 4 Type the time in the **Time** text box.  
**NOTE** Include AM or PM if your selected Time Format requires that field.
- 5 Select **OK**.

## Bar Code (Menu > Setup > System > Bar-code Setup)

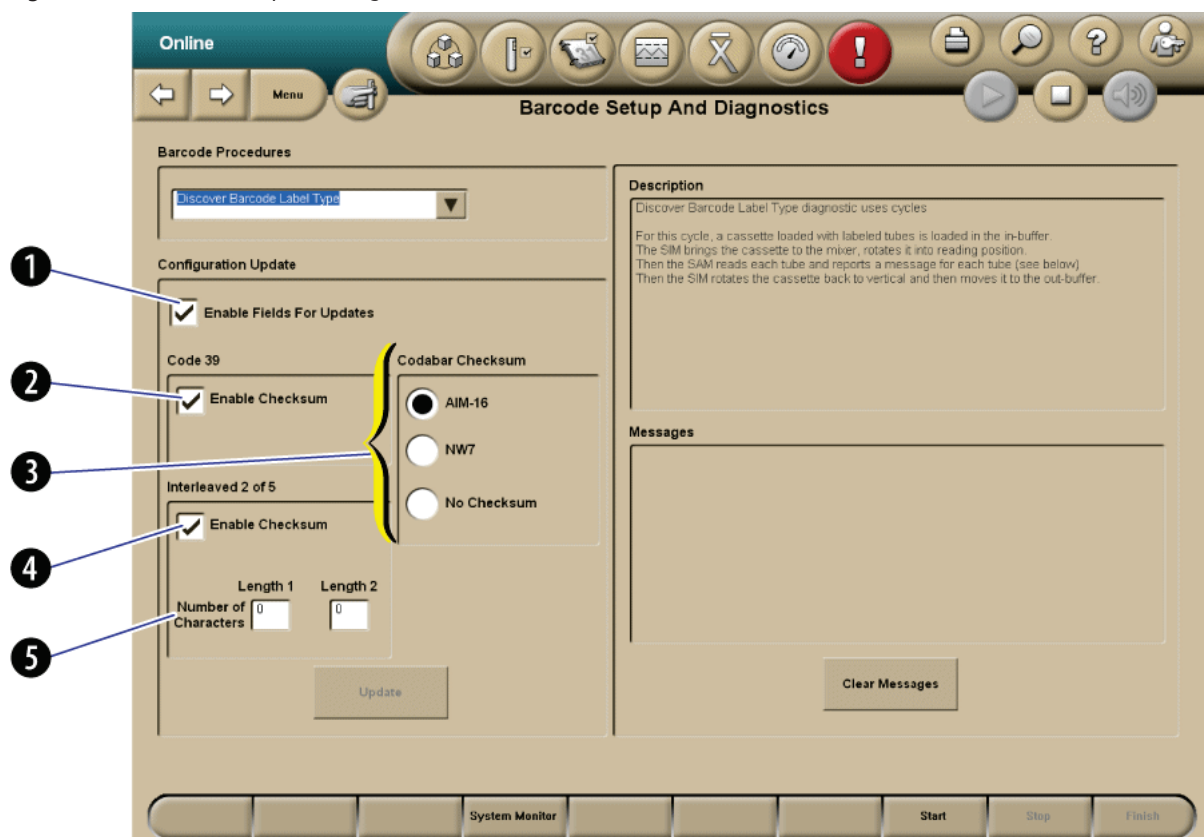
Bar-code setup includes:

- [Discover the Bar-code Label Type](#)
- [Update the Bar-code Reader Configuration](#)

### Discover the Bar-code Label Type

Select **Discover Barcode Label Type** from the **Barcode Procedures** drop-down list. A **Description** appears on the right hand side of the screen to assist you with the procedure. **Messages** will display during and after completion of the procedure; these will indicate the barcode label type.

Figure 9.9 Bar-code Setup and Diagnostics Screen



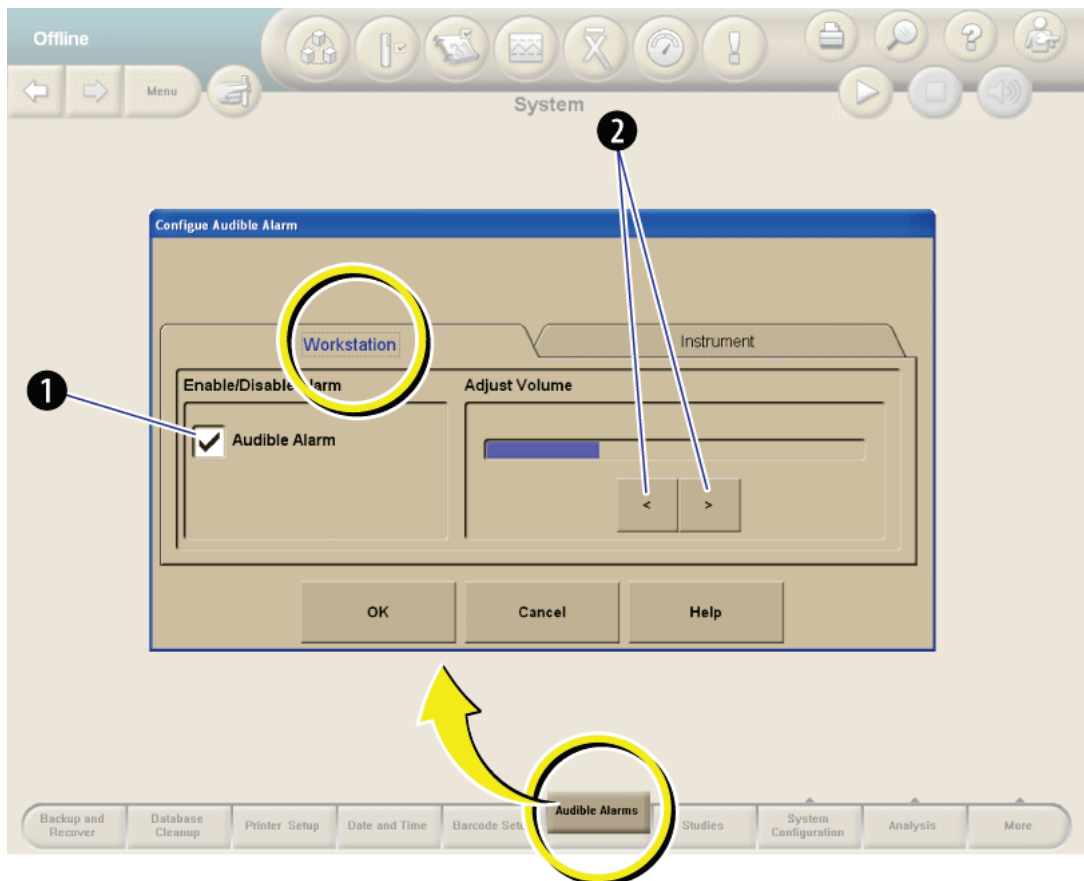
### Update the Bar-code Reader Configuration

- 1 From the Bar-code Setup and Diagnostics screen Configuration Update section, select the **Enable Fields for Update** check box.  
**NOTE** Beckman Coulter recommends that you enable checksum for bar-code labels.
- 2 Configure the system to read your bar code.
- 3 If you are using interleaved 2 of 5 bar-code labels, type the **Number of Characters** in the **Length 1** text box and the **Length 2** text box.  
**NOTE** If the Enable Checksum check box is selected, the numbers should be odd numbers ranging from three to 21.  
If the Enable Checksum check box is not selected, the numbers should be even numbers ranging from four to 22.
- 4 Select the **Update** button to save the configuration.

## Audible Alarms (Menu > Setup > System > Audible Alarms)

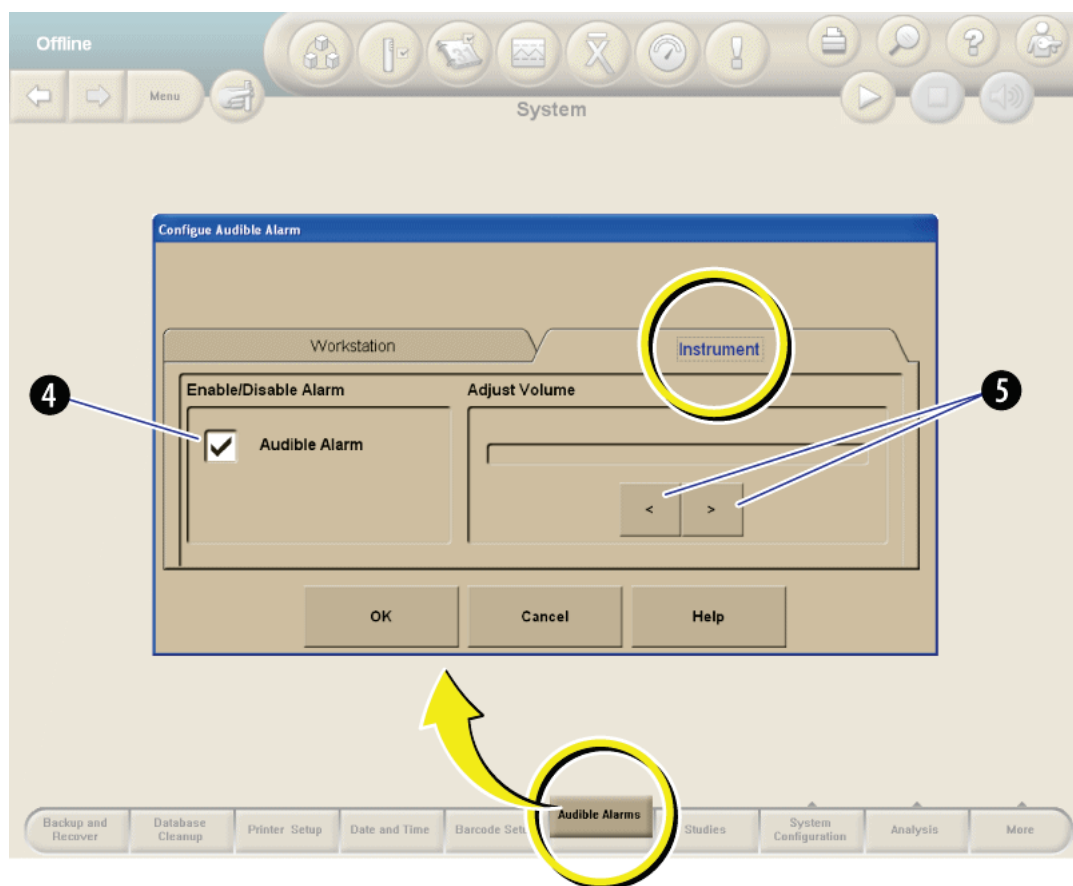
Audible alarms exist both at the System Manager (Workstation) and at the SPM (Instrument). The alarms can function independently.

**Figure 9.10** Configure Audible Alarms - Workstation Dialog Box



- 1 To enable the System Manager's audible alarm select the **Audible Alarm** check box on the Workstation tab.
- 2 Adjust the volume of the System Manager's audible alarm using the arrow in the **Adjust Volume** panel.

- 3 To enable the SPM's audible alarm select the **Audible Alarm** check box on the Instrument tab.



- 4 Use the arrows in the **Adjust Volume** panel to adjust the volume of the SPM's audible alarm.
- 5 Select **OK**.

## Studies (Menu > Setup > System > Studies)

Studies allows you to run samples without test orders. The samples are run in a batch process, without the use of decision rules. Examples of the use of Studies include linearity studies.

In order to use studies, a Default Test Order must be configured and batching must be enabled prior to enabling studies. Refer to [Batching Enabled](#) in this chapter for instructions on enabling batching.

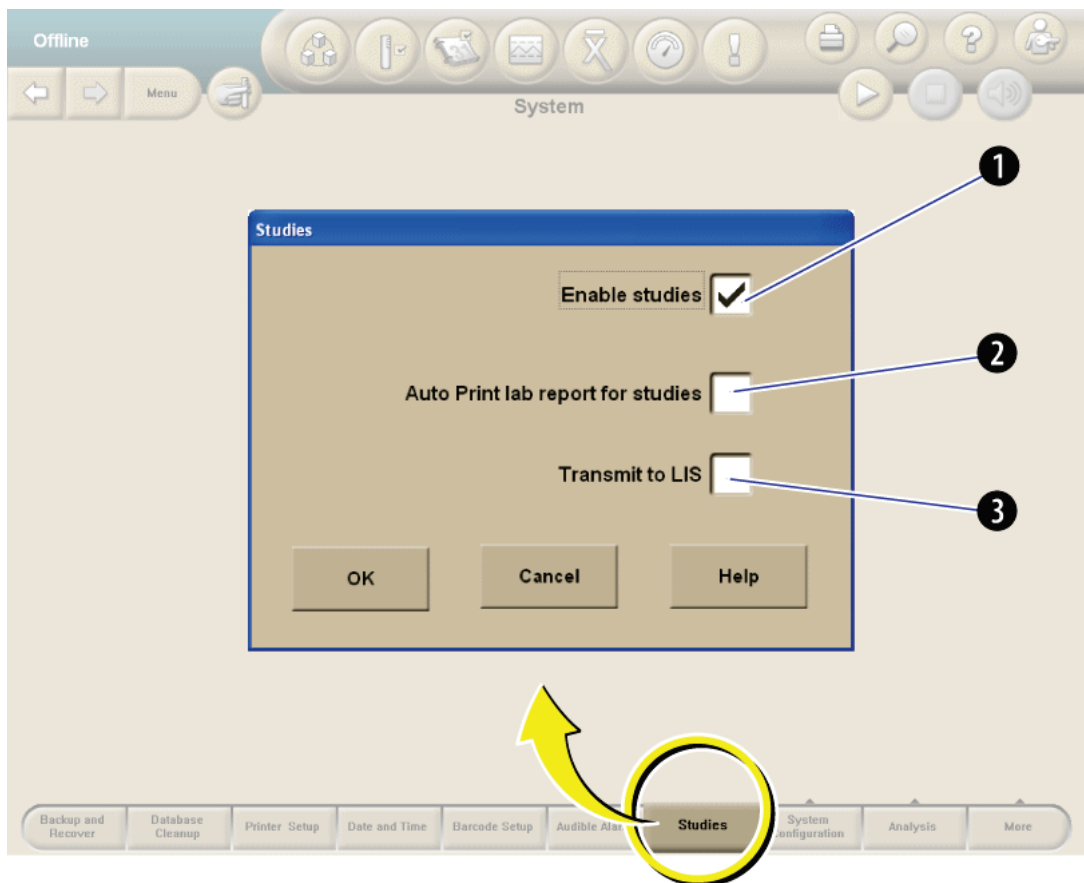
## Setup

System Setup (Menu > Setup > System)

Samples analyzed in Studies contain the leading figures SS- in the Specimen ID or Tube Position ID field.

**NOTE** You must be offline to enable Studies.

**Figure 9.11** Studies Dialog Box



- 1 Select the **Enable studies** check box.
- 2 To automatically print reports for Studies, select the **Auto print lab report for studies** check box.
- 3 To transmit Studies results to a host, select the **Transmit to LIS** check box.
- 4 Select **OK**.

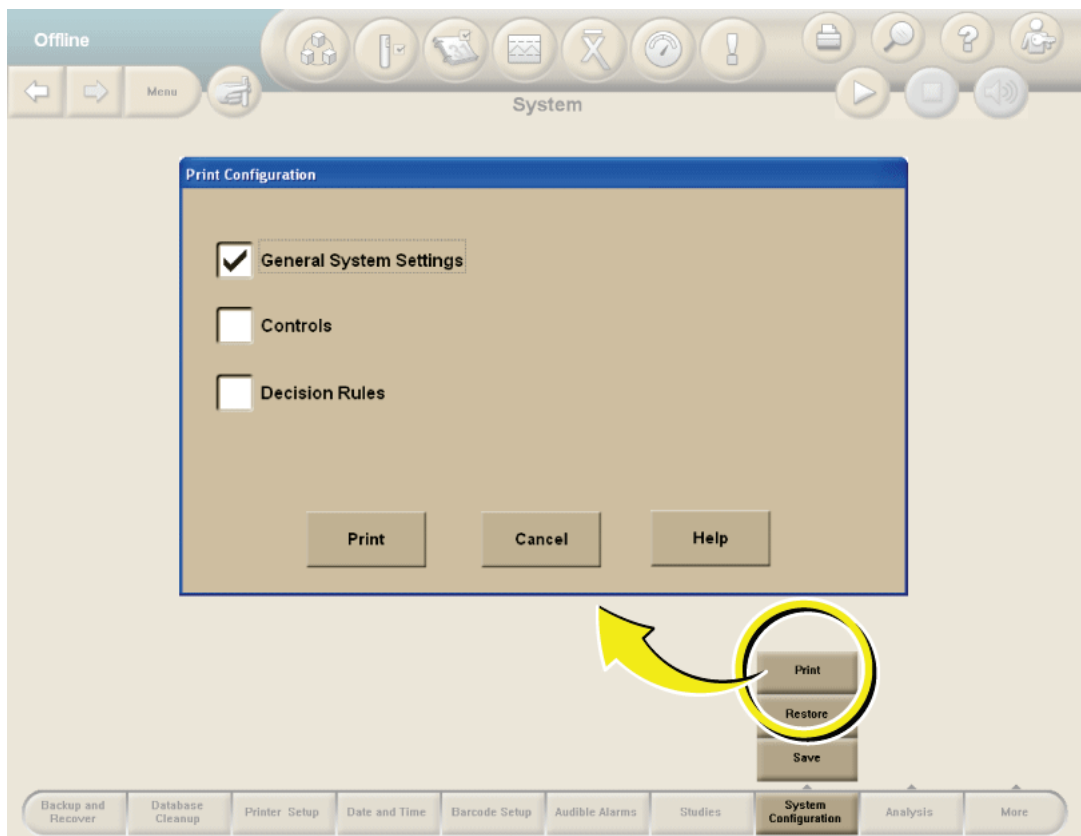
- 5 Completed results for Studies samples can be found in the Custom Worklist using the Studies filter.

**NOTE** When finished with your Studies, return your system to its normal operating configuration.

## Print System Configuration (Menu > Setup > System > System Configuration > Print)

You can obtain a printout of current General System Settings (for example, your barcode configuration, reporting formats), as well as Control and Decision Rule settings.

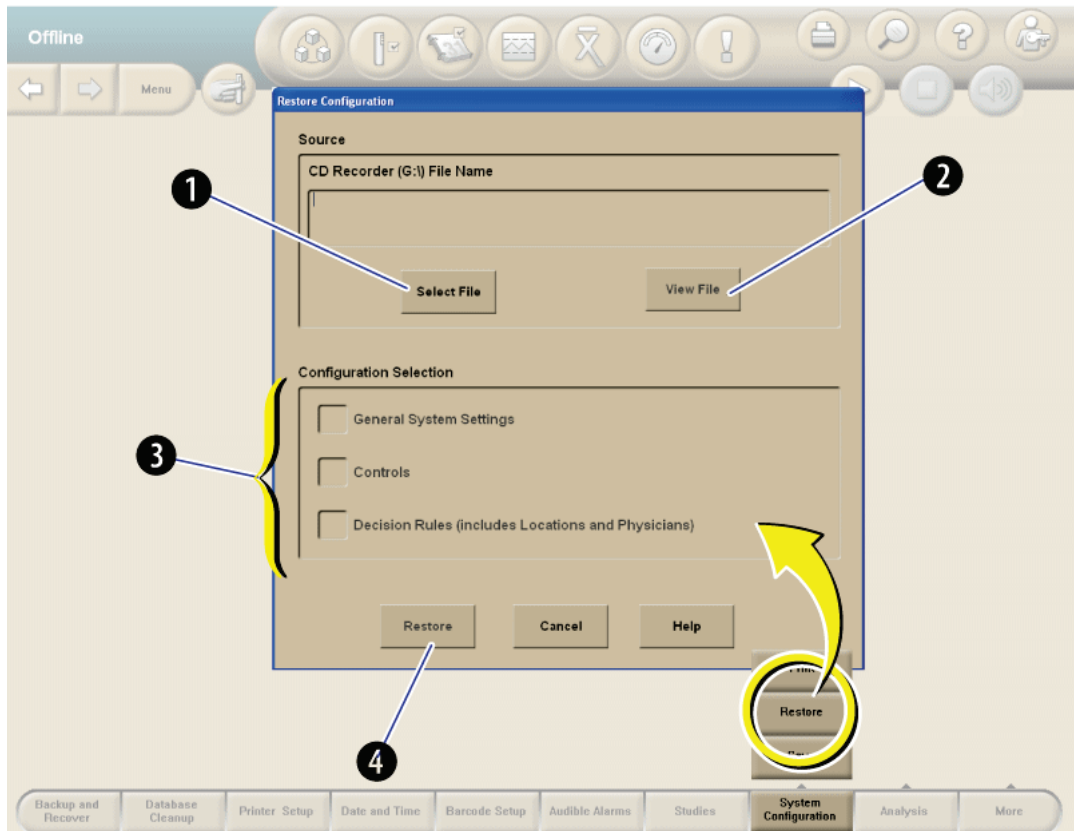
**Figure 9.12** Print Configuration Dialog Box



Select the appropriate check boxes and then select the **Print** button.

## Restore System Configuration (Menu > Setup > System > System Configuration > Restore)

Figure 9.13 Restore Configuration Dialog Box



### CAUTION

Restoration of previous information may negate changes made since the configuration was last restored (or the database was last saved). Please verify the appropriateness of setup / configuration information before proceeding.

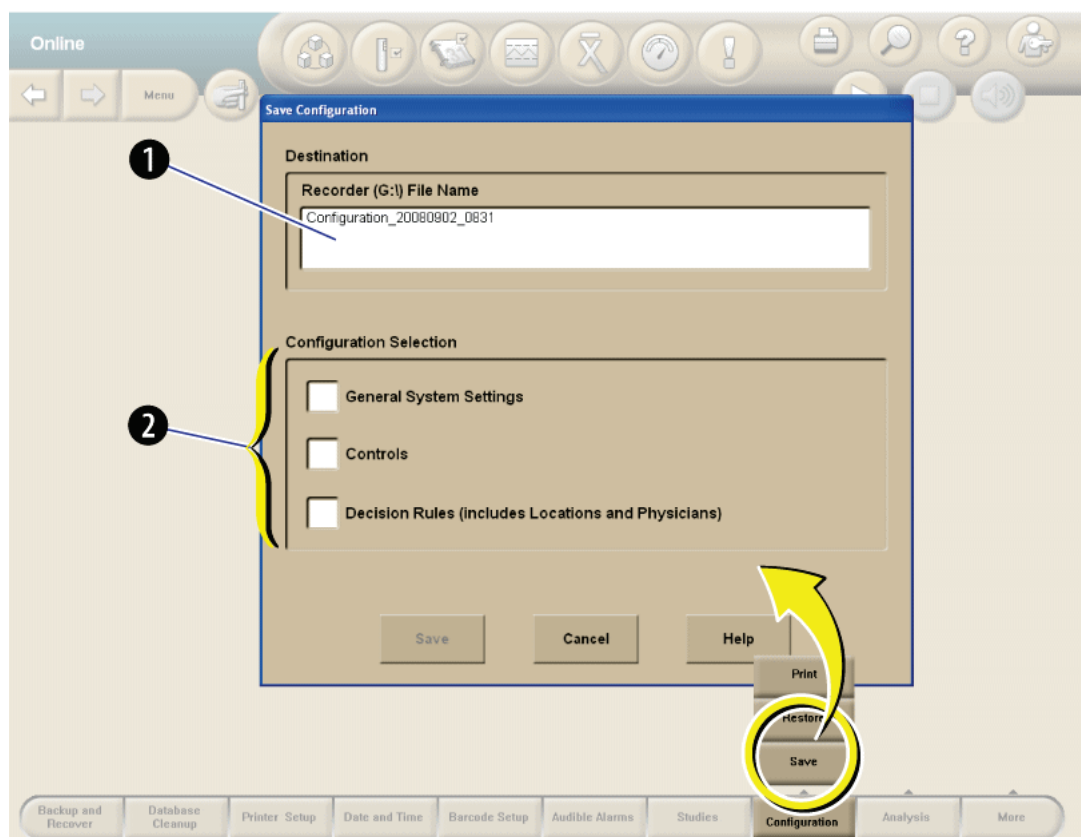
- 1 Select the **Select File** button and follow the directions on the screen.
- 2 To view the restoration file, select the **View File** button.
- 3 Select the appropriate **Configuration Selection** options:
  - **General System Settings**
  - **Controls**
  - **Decision Rules (Includes Locations and Physicians)**

- 4 Select the **Restore** button to restore the selected configuration.

## Save System Configuration (Menu > Setup > System > System Configuration > Save)

Saving your system configuration allows you to save the current configuration to a selected destination, so that it will be available should you need to restore your system configuration to these settings at some point in the future.

**Figure 9.14** Save Configuration Dialog Box



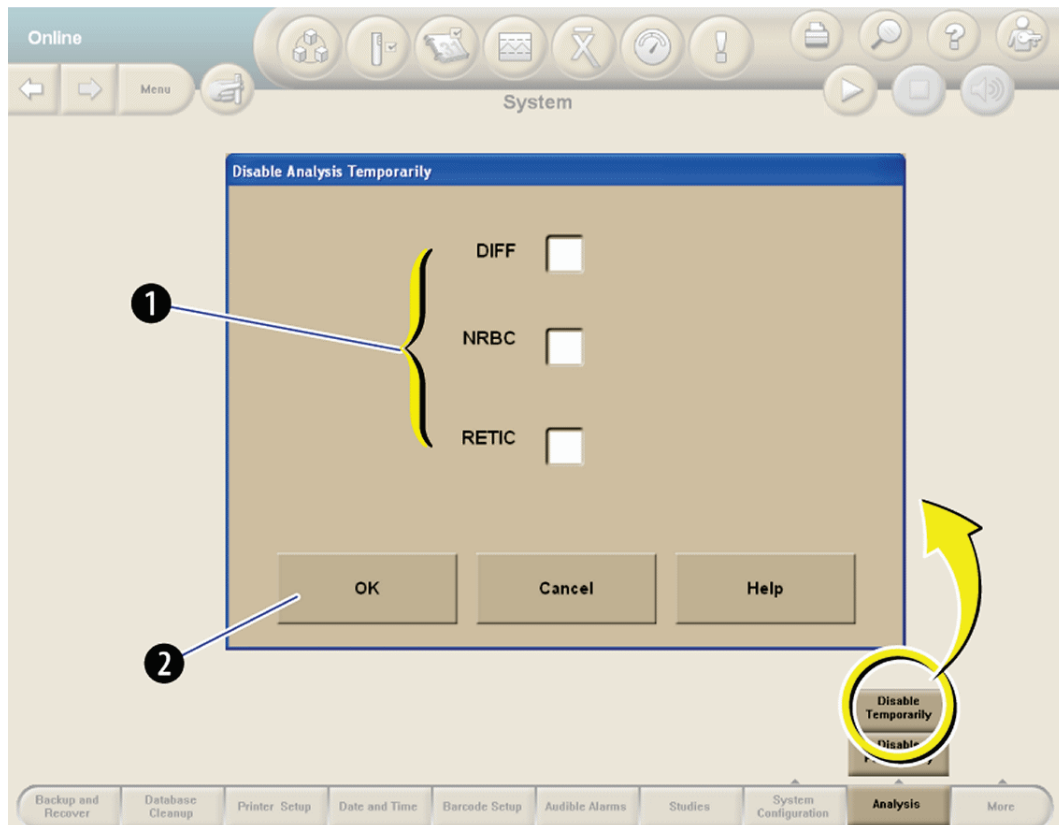
- 1 Type a file name in the **CD Recorder (G:) File Name** text box.
- 2 Select the appropriate **Configuration Selection** options, then select the **Save** button:



## Temporarily Disable Analysis (Menu > Setup > System > Analysis > Disable Temporarily)

If there is a problem with either the Diff, NRBC or Retic modules, Temporarily Disable Analysis allows the you to run the SPM without using this module and without generating tests results for the temporarily disabled analysis.

**Figure 9.15** Disable Analysis Temporarily

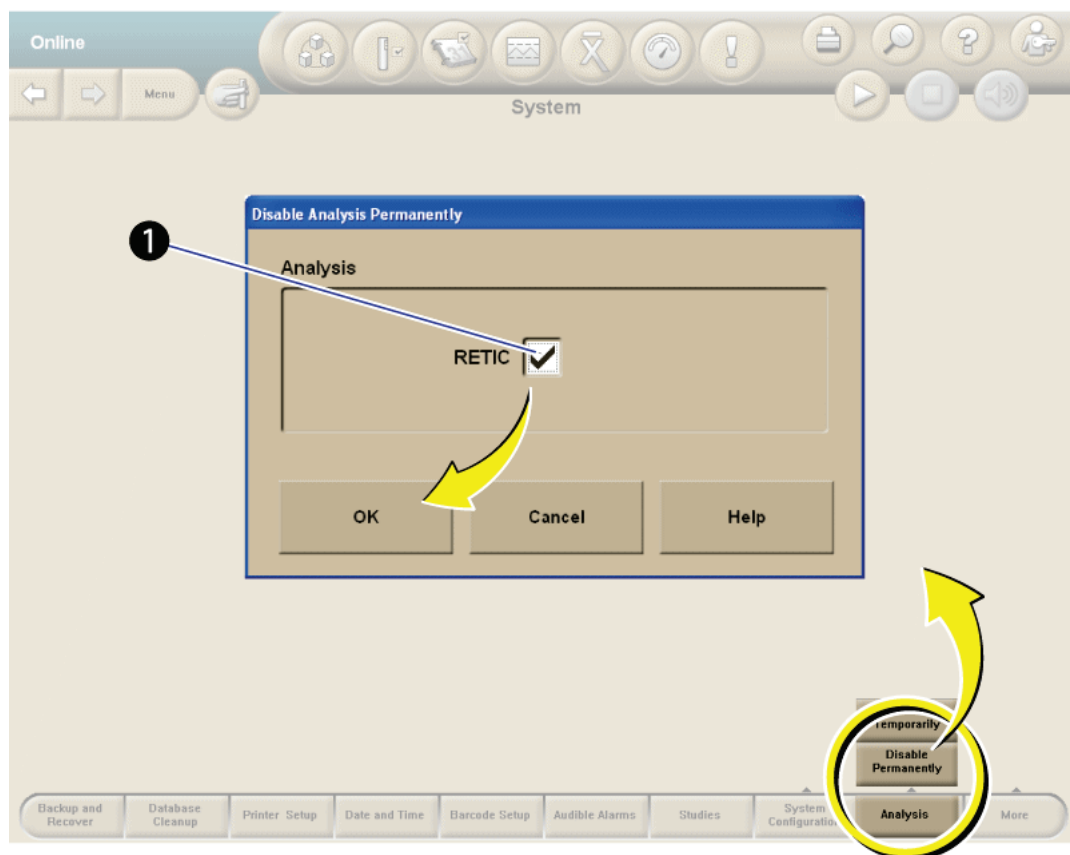


- 1 Select the modes of Analysis that you want to disable on the **Analysis** panel by selecting the appropriate check box, then select **OK**:
- 2 To enable a mode, remove the check from the check box, then select **OK**. The system will prompt you to do a system verification when re-enabling modes of Analysis that have been disabled.

## Permanently Disable Retic Analysis(Menu > Setup > System > Analysis > Disable Permanently)

If you choose not to run Retics in your laboratory, you can disable Retic Analysis in order to save reagents by running without reticulocyte reagents on your system.

**Figure 9.16** Disable Analysis Permanently Dialog Box



- 1 Select the **Retic** check box on the Analysis pane and select **OK**.

**NOTE** The following warning message will display on a DxH pop-up dialog box:  
*You have requested to permanently disable an analysis. Please note that disabling Retic analysis makes it impossible to re-enable it at a future time without a service call.*

*Any decision rules that use panels containing Retic tests will be disabled.  
 Any active test orders that include pending Retic tests should be cancelled from the test orders.  
 Any individual Retic tests to be disabled should be done manually.  
 Any reagents related to this analysis should be removed  
 All panels containing Retic tests will be disabled.*

*Do you want to continue with this request?*

- 2 Select **OK** to permanently disable Retic analysis.

## Setup

System Setup (Menu > Setup > System)

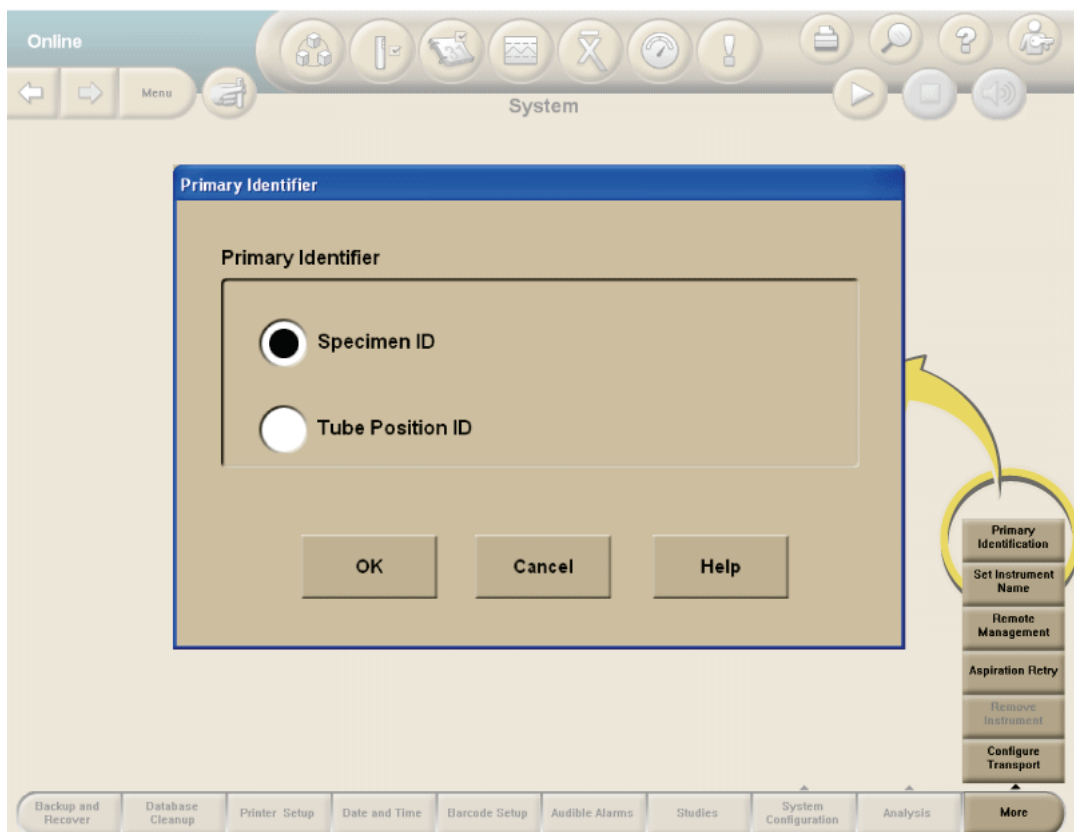
- 3 Do the [Remove Retic Reagents Procedure \(Menu > Diagnostics > Dx Tools > Maintenance\)](#) procedure to remove the reticulocyte reagents from your system.

## Set Specimen Primary Identification (Menu > Setup > System > More > Primary Identification)

Set the Specimen ID as your Primary Identifier if you have a bidirectional LIS or use bar coded specimens. Set Tube Position ID as your Primary Identifier if you do not use bar codes on specimens.

**NOTE** If Tube Position ID is used, the Tube Position ID labeling must be unique to each cassette used throughout the lab. Whatever identifier not selected as the Primary Identifier automatically is considered the Secondary Identifier.

Figure 9.17 Primary Identifier Dialog Box

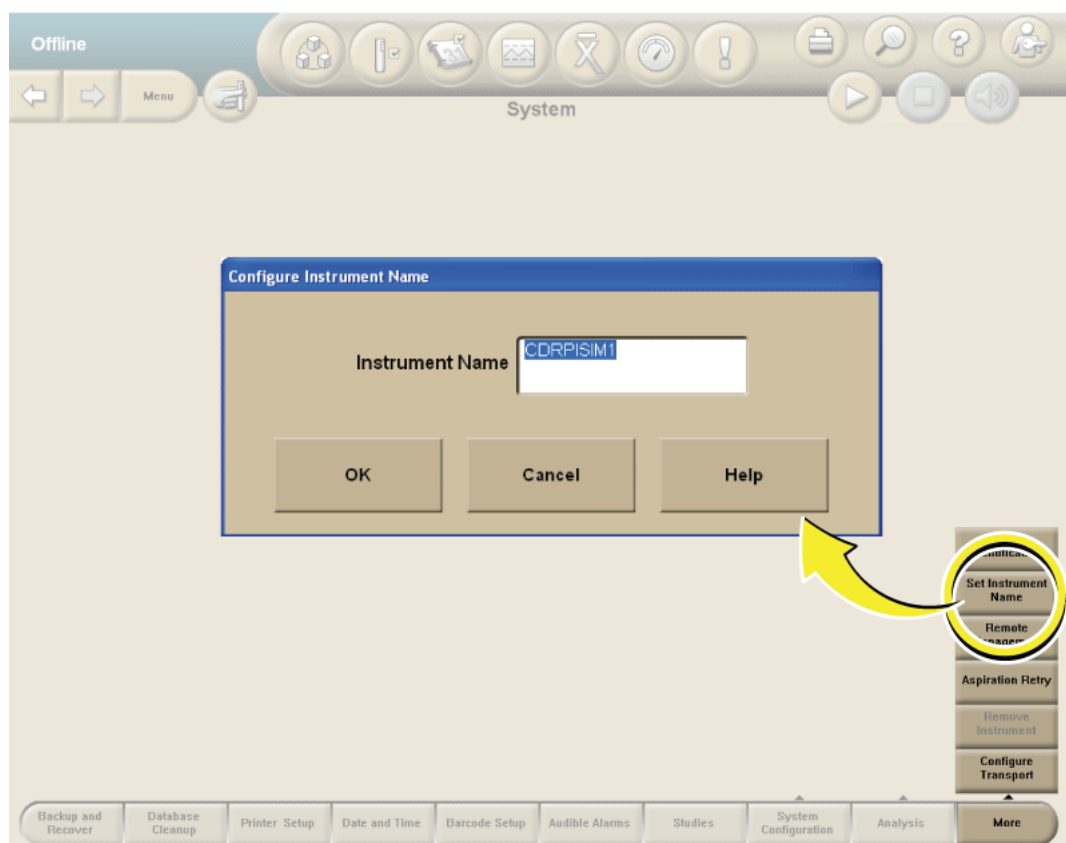


Select a Primary Identifier from the option buttons, then select **OK**.

## Set Instrument Name (Menu > Setup > System > More > Set Instrument Name)

Type an **Instrument Name** and select **OK**.

**Figure 9.18** Configure Instrument Name Dialog Box



## Remote Management (Menu > Setup > System > More > Remote Management)

The Remote Management screen is where your system's hardware is registered with Beckman Coulter's ProService. Registration creates an account that allows remote monitoring of your system. Remote Management, through ProService, can also be used for direct communication with your system software by Beckman Coulter Service personnel, for troubleshooting services. The Allow Control Settings give you the ability to never allow the direct communication, always allow it, or allow it for 24 hours only.

1.10.2. 4. Analizatoriaus programinė įranga turi nuotolinio serviso priežiūros modulį, leidžiantį nuotoliniu būdu įvertinti analizatorių būklę, atlikti gedimų diagnostiką ir pašalinti nedidelius sutrikimus.